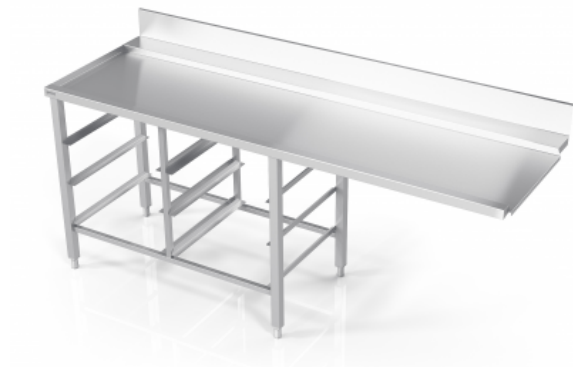


**TABLE TO DISHWASHER
WITH 6 GUIDES FOR
DISHWASHER BASKETS
(PX0-BR6)**



Standard Features:

- Connection for all types of dishwashers available (X=1-30 mm, Y=15 mm)
- With or without upstand
- Hygienic type of welding
- Adjustable stainless steel feet (amplitude 65 mm +30/-35)

Additional Features:

- Sinks with noise dampening pads
- Plumbing sets
- Customised upstand (height: 40 - 120 mm)
- Customised legs offset (min 25 mm) (moved from left/right)